

The Monthly Employment Report

June 2025

Prepared by Anneliese Vance-Sherman, chief labor economist

On a seasonally adjusted basis, preliminary estimates from the Bureau of Labor Statistics (BLS) show nonfarm employment in Washington increased by 10,900 in June 2025.^a Employment in the private sector increased by 6,300 jobs over the month and employers in the public sector increased by 4,600.

On a not seasonally adjusted basis, estimates for June 2024 through June 2025 show an increase of 1,900 jobs statewide. Employers in the private sector collectively added 6,100 jobs while the public sector shed an estimated 4,200 jobs over the year.

Washington's preliminary seasonally adjusted unemployment rate for June 2025 was 4.5%, unchanged from the estimated unemployment rate for May. For reference, the unemployment rate in June 2024 was 4.5%.

BLS estimates of monthly job gains and losses are based on a survey of businesses. Preliminary estimates are subject to revision.

For more information, contact Anneliese Vance-Sherman by phone at 564-900-0748 or by email at anneliese.vance-sherman@esd.wa.gov.

^a Most of the employment numbers in this report refer to jobs, not people. For example, if a person holds two positions, these positions are counted as two jobs in the employment series. In the unemployment section, these positions refer to individuals, not jobs. In this case, a person holding two jobs is counted only once.

Resident civilian labor force and unemployment, seasonally adjusted

The resident civilian labor force is the total number of people in the workforce, employed and unemployed, ages 16 and older.

The number of unemployed is the estimated number of people who currently do not have a job, are available for work and have actively looked for work in the last four weeks.

The unemployment rate is the ratio of the estimated number of unemployed divided by the civilian labor force.

Figure 1: Resident civilian labor force and unemployment, seasonally adjusted, United States and Washington state, May and June 2024 and May and June 2025

United States	June 2025 preliminary	May 2025 revised	June 2024 revised	May 2024 revised
Unemployment rate	4.1%	4.2%	4.1%	4.0%

Washington	June 2025 preliminary	May 2025 revised	June 2024 revised	May 2024 revised
Unemployment rate	4.5%	4.5%	4.5%	4.6%
Resident labor force	4,033,538	4,042,095	4,067,816	4,064,833
Unemployed	180,735	180,997	184,514	185,347

Seattle/Tacoma/Bellevue	June 2025 preliminary	May 2025 revised	June 2024 revised	May 2024 revised
Unemployment rate	4.4%	4.4%	4.2%	4.3%
Resident labor force	2,341,874	2,349,965	2,323,910	2,320,013
Unemployed	102,135	102,779	97,590	98,771

Source: Employment Security Department/LMIR Division; U.S. Bureau of Labor Statistics, Local Area Unemployment Statistics

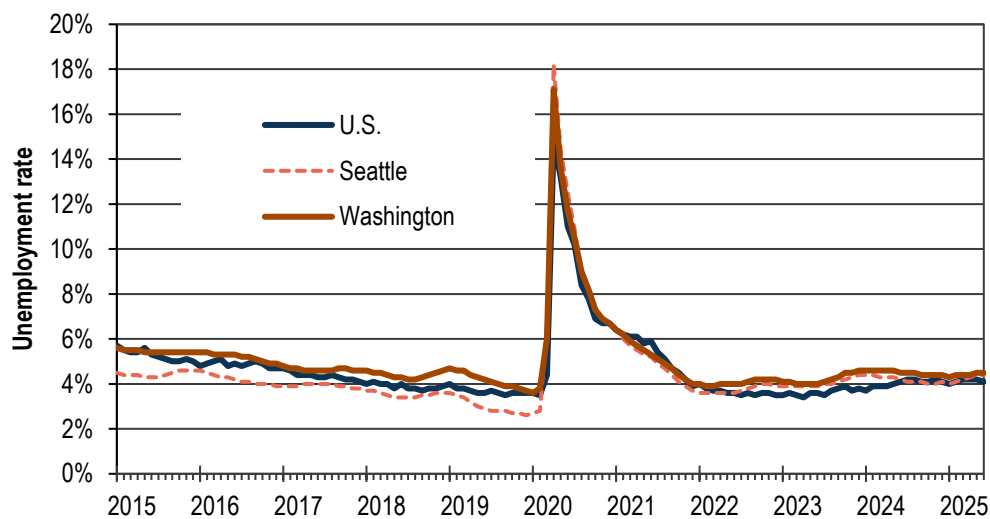
Unemployment, seasonally adjusted

The BLS estimates Washington's preliminary seasonally adjusted unemployment rate for June 2025 was 4.5%, unchanged from the rate reported in the previous month. The revised estimate for June 2024 was 4.5%.

According to BLS estimates, the number of unemployed Washington residents decreased by 262 over the month. The estimated number of employed Washington residents decreased by 8,295. Overall, this amounted to a decrease of 8,557 workers in the labor force from May to June 2025. June 2025 preliminary unemployment rates:

- United States (preliminary) 4.1%
- Washington (preliminary) 4.5%
- Seattle area (preliminary) 4.4%

Figure 2: Unemployment rates, seasonally adjusted, U.S., Washington and Seattle, January 2015 through June 2025



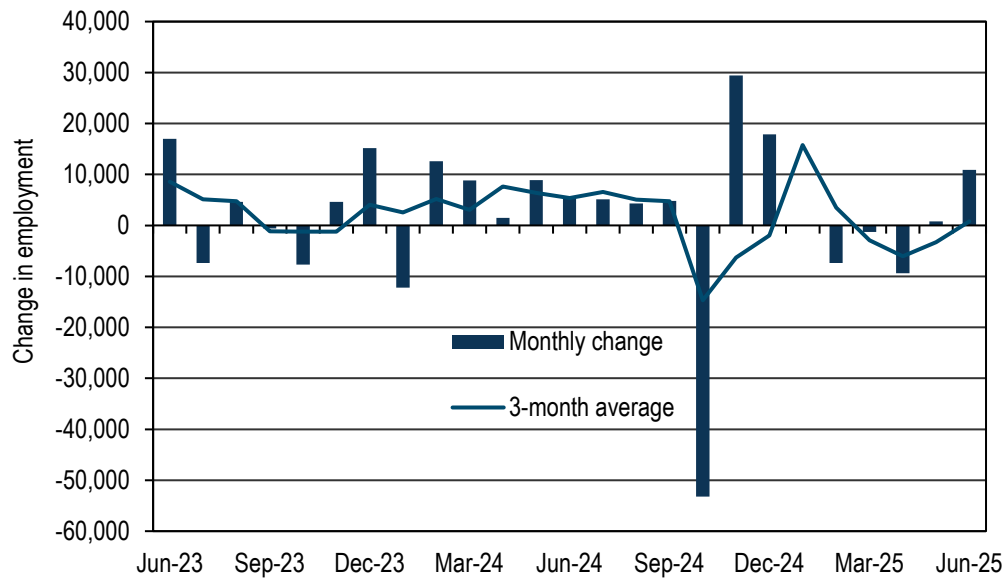
Source: Employment Security Department/LMIR Division; U.S. Bureau of Labor Statistics, Local Area Unemployment Statistics

Employment change, seasonally adjusted

Based on BLS estimates, Washington state nonfarm employment increased by 400 from May to June 2025. Recent employment change:

- April 2025: down 9,400 (revised)
- May 2025: up 800 (revised)
- June 2025: up 10,900 (preliminary)

Figure 3: Monthly employment change, seasonally adjusted, Washington state, June 2023 through June 2025



Source: Employment Security Department/LMIR; U.S. Bureau of Labor Statistics, Current Employment Statistics

Employment and unemployment, seasonally adjusted

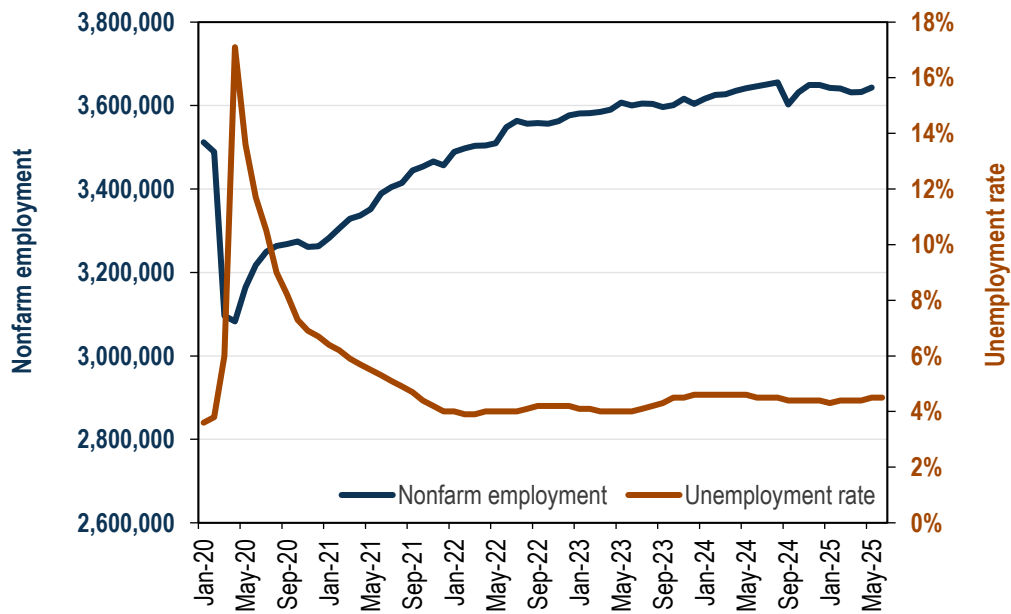
February 2020 (start of 2020 employment recession in Washington)

- Nonfarm employment: 3,511,700
- Unemployment rate: 3.8%

June 2025 (preliminary)

- Nonfarm employment: 3,643,300
- Unemployment rate: 4.5%

Figure 4: Nonfarm employment and unemployment rate, seasonally adjusted, Washington, January 2020 through June 2025



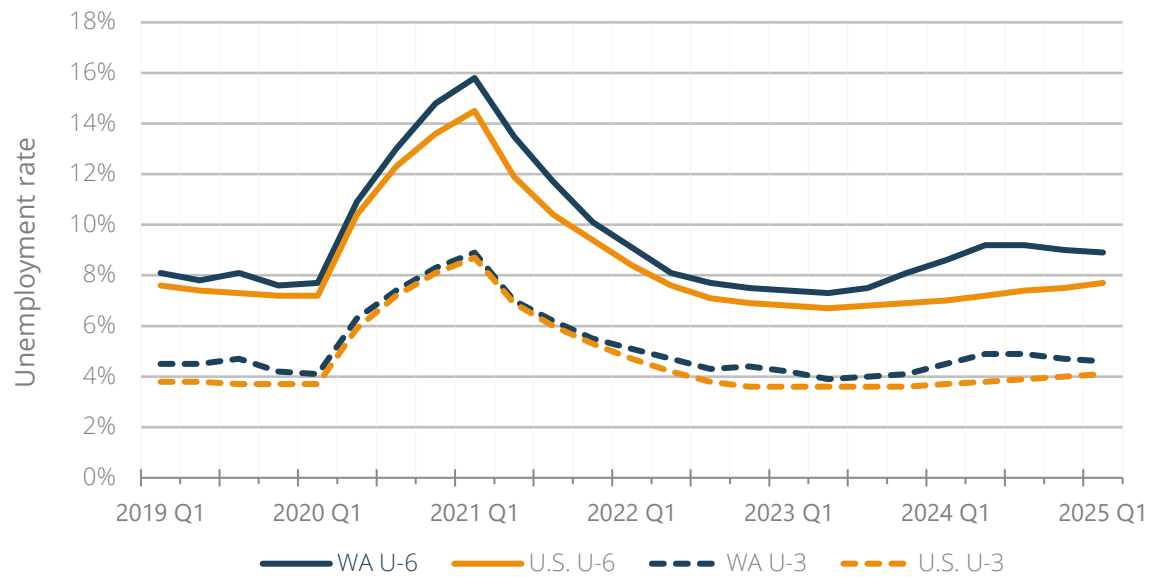
Source: Employment Security Department/LMIR; U.S. Bureau of Labor Statistics, Current Employment Statistics, Local Area Unemployment Statistics.

U-6: Broader annual average unemployment remained virtually unchanged

BLS recently updated its alternative measures of labor underutilization for states to include four-quarter rates through the fourth quarter of 2024. One such alternative measure is the U-6 rate, which considers not only the unemployed population in the official U-3 unemployment rate, but also marginally attached workers and those employed part time for economic reasons. The U-6 rate is defined by BLS as the “total unemployed, plus all marginally attached workers, plus total employed part time for economic reasons, as a percent of the civilian labor force plus all marginally attached workers.” This U-6 measure measures the “unemployed, underemployed, and those who are not looking but who want a job.”

The U-6 annual average unemployment rate for the four-quarter period through the first quarter of 2025 for Washington state was 8.9%. This is down from the previous four quarter moving average (9.0% through third quarter of 2024), but statistically unchanged. The U.S. U-6 average for the four-quarter period through the fourth quarter of 2024 was 7.7%. Washington's U-6 rate tends to run higher than the national rate.

Figure 5: Alternative measures of labor underutilization, four-quarter moving average, Washington state and U.S. U-3 and U-6 unemployment rates



Source: Employment Security Department/LMIR; U.S. Bureau of Labor Statistics, Current Population Survey and Local Area Unemployment Statistics

Figure 6: Alternate measures of labor underutilization, four quarter moving average, Washington

Year	WA/U.S.	Q1	Q2	Q3	Annual average
2025	WA	8.9%			
2025	U.S.	7.7%			
2024	WA	8.6%	9.2%	9.2%	9.0%
2024	U.S.	7.0%	7.2%	7.4%	7.5%
2023	WA	7.4%	7.3%	7.5%	8.1%
2023	U.S.	6.8%	6.7%	6.8%	
2022	WA	9.1%	8.1%	5.0%	7.5%
2022	U.S.	8.4%	7.6%	7.1%	6.9%
2021	WA	15.8%	13.5%	11.7%	10.1%
2021	U.S.	14.5%	11.9%	10.4%	9.4%
2020	WA	8.1%	10.9%	13.0%	14.8%
2020	U.S.	7.7%	10.4%	12.3%	13.6%
2019	WA	8.1%	7.8%	8.1%	7.6%
2019	U.S.	8.3%	8.1%	7.8%	7.7%

Source: Employment Security Department/LMIR; U.S. Bureau of Labor Statistics, Current Population Survey and Local Area Unemployment Statistics

Industry employment in Washington, seasonally adjusted

One-month employment change by industry: Based on a BLS survey of businesses and governments, Washington employers collectively added an estimated 10,900 jobs over the month, on a seasonally adjusted basis:

- May 2025 employment estimates were revised up by 400 jobs, adjusting the initial reported job gains from 400 to 800.
- Overall, employment increased in seven major industry sectors and decreased in five.
- Private sector employment is estimated to have increased by 6,300 and government employment increased by 4,600 in June.
- The largest one-month sector level gains in private industry were observed in leisure and hospitality (up 7,400), information (up 1,900) and construction and manufacturing (each up 1,000). The largest employment gains in education and health services were attributable to food services and drinking places. Within the information sector, software publishers added 1,700 jobs.
- The deepest one-month private sector losses were observed in professional and business services and retail trade (each down 2,200). Losses in professional and business services were concentrated among administrative and support services (down 2,300) and the deepest losses in retail were observed in other retail trade (down 1,500) and food and beverage stores (down 600).

Figure 7: Estimated one-month employment change by industry, seasonally adjusted, Washington state, May to June 2025

Industry	One-month change
Total nonfarm	10,900
Leisure and hospitality	7,400
Government	4,600
Information	1,900
Construction	1,000
Manufacturing	1,000
Other Services	600
Wholesale Trade	400
Mining and logging	0
Education and Health Services	-100
Financial Activities	-500
Transportation, Warehousing and Utilities	-1,000
Retail Trade	-2,200
Professional and Business Services	-2,200

Source: Employment Security Department/LMIR; U.S. Bureau of Labor Statistics, Current Employment Statistics

Industry employment in Washington, not seasonally adjusted

Change by industry over the year: Based on a BLS survey of businesses and governments, Washington businesses collectively added an estimated 1,900 jobs from June 2024 to June 2025. This is a 0.1% increase in employment over the year.

- Over the past 12 months, employment in six major industry sectors increased and seven decreased.
- Private sector employment increased 0.2%, up an estimated 6,100 jobs.
- Public sector employment decreased 0.7%, down an estimated 4,200 jobs. One-year losses primarily affected federal and state government employment.
- The largest private sector gains were attributable to hiring in education and health services (up 14,900), transportation, warehousing and utilities (up 7,000) and information (up 4,800); the deepest one-year losses were observed in construction (down 9,800) and manufacturing (down 5,000).

- Education and health services employment gains were primarily attributable to hiring in health and social services; within that, social assistance added the most jobs (6,100).
- Losses in construction were predominantly attributable to specialty trade contractors (down 7,800).

Figure 8: Estimated employment change by industry over the year, not seasonally adjusted, Washington state, June 2024 through June 2025

Industry	One year change
Total nonfarm	1,900
Education and health services	14,900
Transportation, warehousing and utilities	7,000
Information	4,800
Leisure and hospitality	3,200
Other services	2,500
Wholesale trade	1,300
Mining and logging	-100
Retail trade	-3,800
Financial activities	-4,100
Government	-4,200
Professional and business services	-4,800
Manufacturing	-5,000
Construction	-9,800

Source: Employment Security Department/LMIR; U.S. Bureau of Labor Statistics, Current Employment Statistics

Seasonally adjusted employment

Seasonally adjusted numbers account for normal seasonal patterns that occur year after year, such as strong seasonal hiring in retail trade around the holidays. Taking into account normal seasonal variations makes it possible to see unusual changes in employment levels.

- **Normal seasonal change:** expected monthly change in employment based on history.
- **Estimated change:** employment change over the month based on BLS survey data.
- **Seasonally adjusted change:** change in employment accounting for normal seasonal patterns.

Figure 9: Normal seasonal change, estimated change and seasonally adjusted change, Washington state, June 2025

Industry	Normal seasonal change	Estimated change	Seasonally adjusted change
Total nonfarm	14,900	25,800	10,900
Leisure and hospitality	7,100	14,500	7,400
Government	-7,100	-2,500	4,600
Information	2,600	4,500	1,900
Construction	2,700	3,700	1,000
Manufacturing	2,800	3,800	1,000
Other Services	1,000	1,600	600
Wholesale Trade	400	800	400
Mining and logging	100	100	0
Education and Health Services	-4,300	-4,400	-100
Financial Activities	1,100	600	-500
Transportation, Warehousing and Utilities	2,000	1,000	-1,000
Retail Trade	2,400	200	-2,200
Professional and Business Services	4,100	1,900	-2,200

Source: Employment Security Department/LMIR; U.S. Bureau of Labor Statistics, Current Employment Statistics

Contact us

For more Washington labor market information, visit [Employment Security's website](#). Contact us at lmir@esd.wa.gov with any questions. County level information will be available at 10 a.m. May 20, 2025. The 2025 publication schedule can be found on [Employment Security's website](#)

Employment Security Department is an equal opportunity employer/program. Auxiliary aids and services are available upon request to people with disabilities. Language assistance services for limited English proficient individuals are available free of charge. Washington Relay Service: 711.

This workforce product was funded by a grant awarded by the U.S. Department of Labor's Employment and Training Administration. The product was created by the recipient and does not necessarily reflect the official position of the U.S. Department of Labor. The U.S. Department of Labor makes no guarantees, warranties, or assurances of any kind, expressed or implied, with respect to such information, including any information on linked sites and including, but not limited to, accuracy of the information or its completeness, timeliness, usefulness, adequacy, continued availability, or ownership. This product is copyrighted by the institution that created it. Internal use by an organization and/or personal use by an individual for non-commercial purposes is permissible. All other uses require the prior authorization of the copyright owner.