

The Monthly Employment Report

Washington 3.6%

United States 3.8%

Seasonally adjusted

September 2023



Employment Security Department
WASHINGTON STATE



For workers and businesses affected by COVID-19, Employment Security has updated information on the website at esd.wa.gov. For labor market information questions, please send your emails to data@esd.wa.gov.

Employment estimates in this report are generated by the U.S. Bureau of Labor Statistics (BLS). Monthly employment estimates are subject to revision in subsequent months when more sample data become available. BLS data in this report are rounded to the nearest 100.

On a seasonally adjusted basis, preliminary estimates from the federal Bureau of Labor Statistics (BLS) indicate nonfarm employment in Washington rose by 7,900 in September 2023.1 BLS estimates the private sector gained 6,900 jobs during the month and the public sector gained 1,000 jobs.

On a not seasonally adjusted basis, estimates for August 2022 through August 2023 indicate an increase in employment of 55,300 for the state. The private sector gained 45,200 jobs while the public sector gained an estimated 10,100 jobs over the year.

Washington's preliminary seasonally adjusted unemployment rate for September 2023 is 3.6 percent. The revised estimated August 2023 unemployment rate is at 3.6 percent. The September 2022 unemployment rate was 4.4 percent.

BLS estimates of monthly job gains and losses are based on a survey of businesses. Preliminary estimates are subject to revision. The August 2023 preliminary estimated gain of 2,900 jobs was revised to a gain of 2,500 jobs.

For more information, call Paul Turek at 360-706-3044

Resident civilian labor force and unemployment, seasonally adjusted

The resident civilian labor force is the total number of people in the workforce, employed and unemployed, ages 16 and up.

The number of unemployed is the estimated number of people who currently do not have a job, are available for work and have actively looked for work in the last four weeks.

The unemployment rate is the ratio of the estimated number of unemployed divided by the civilian labor force.

Resident civilian labor force and unemployment, seasonally adjusted

United States and Washington state, August and September 2022 and 2023

Source: Employment Security Department/DATA Division; U.S. Bureau of Labor Statistics, Local Area Unemployment Statistics

	September 2023 (Preliminary)	August 2023 (Revised)	September 2022 (Revised)	August 2022 (Revised)
United States				
Unemployment rate	3.8%	3.8%	3.5%	3.7%
<i>Seasonally adjusted</i>				
Washington				
Unemployment rate	3.6%	3.6%	4.4%	4.3%
Resident labor force	4,061,200	4,067,200	4,007,500	4,001,000
Unemployed	146,900	145,900	177,700	170,300
Seattle/Bellevue/Everett				
Unemployment rate	3.2%	3.2%	3.2%	3.1%
Resident labor force	1,821,200	1,821,600	1,779,000	1,776,900
Unemployed	59,200	57,800	56,500	54,500

Data Architecture, Transformation and Analytics Division
September 2023

¹Most of the employment numbers discussed in this report refers to jobs, not people. For example, if a person holds two positions, these positions are counted as two jobs in the employment series. In the section titled "Unemployment," these positions refer to individuals, not jobs. In this case, a person holding two jobs is counted only once.

Unemployment, seasonally adjusted

The BLS estimates Washington's preliminary seasonally adjusted unemployment rate for September 2023 is 3.6 percent. The revised estimated August 2023 unemployment rate is 3.6 percent.

According to BLS estimates, the number of unemployed people rose by 1,000 in September 2023 compared to August 2023. At the same time, the number of employed people fell by an estimated 7,000. Overall, this amounted to a decrease of 6,000 people in the labor force.

The preliminary September 2023 unemployment rate is 0.8 percentage points lower than the September 2022 rate of 4.4 percent.

September 2023 preliminary unemployment rates:

U.S. (preliminary) 3.8%

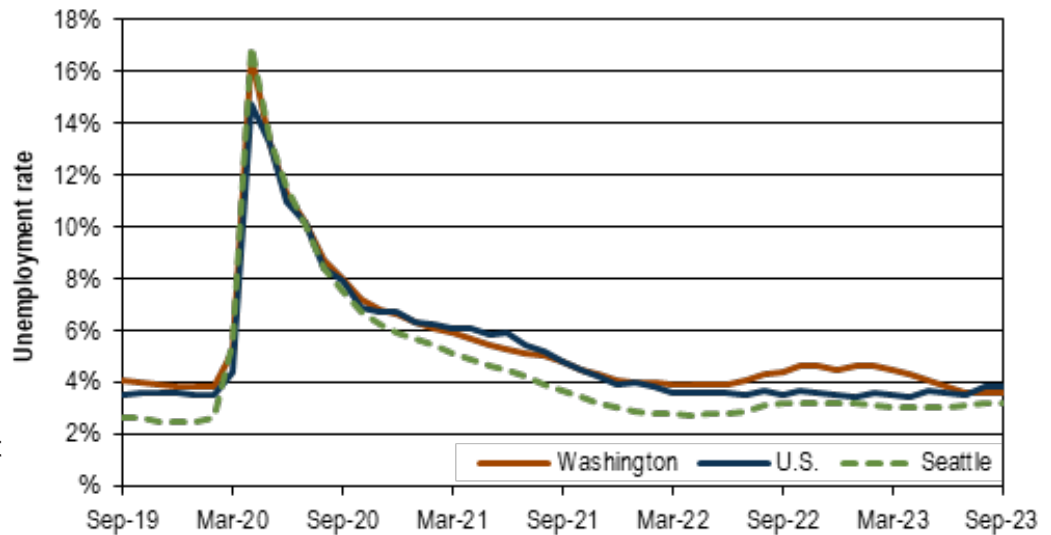
Washington (preliminary) 3.6%

Seattle area (preliminary) 3.2%

Unemployment rates, seasonally adjusted

U.S., Washington and Seattle, September 2019 through September 2023

Source: Employment Security Department/DATA Division; U.S. Bureau of Labor Statistics, Local Area Unemployment Statistics



Employment change, seasonally adjusted

Based on BLS estimates, Washington state nonfarm employment increased by 7,900 jobs from August 2023 to September 2023.

Recent employment change

July 2023: down 6,300 jobs (revised)

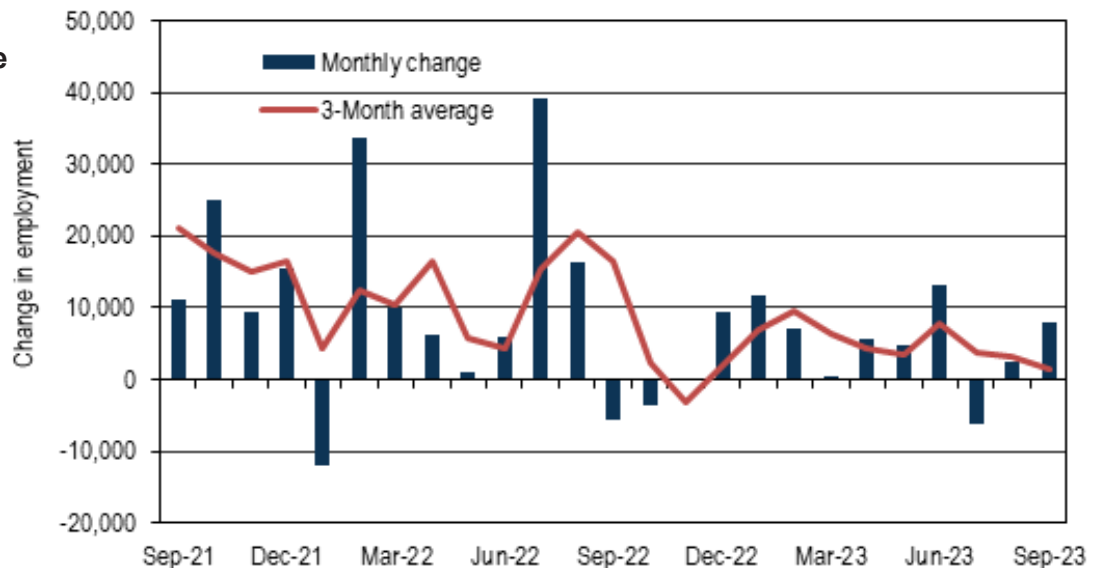
August 2023: up 2,500 jobs (revised)

September 2023: up 7,900 jobs (preliminary)

Monthly employment change, seasonally adjusted

Washington state, September 2021 through September 2023

Source: Employment Security Department/DATA; U.S. Bureau of Labor Statistics, Current Employment Statistics



Employment and unemployment, seasonally adjusted

February 2020 (start of 2020 employment recession in Washington)

Nonfarm employment: 3,510,800

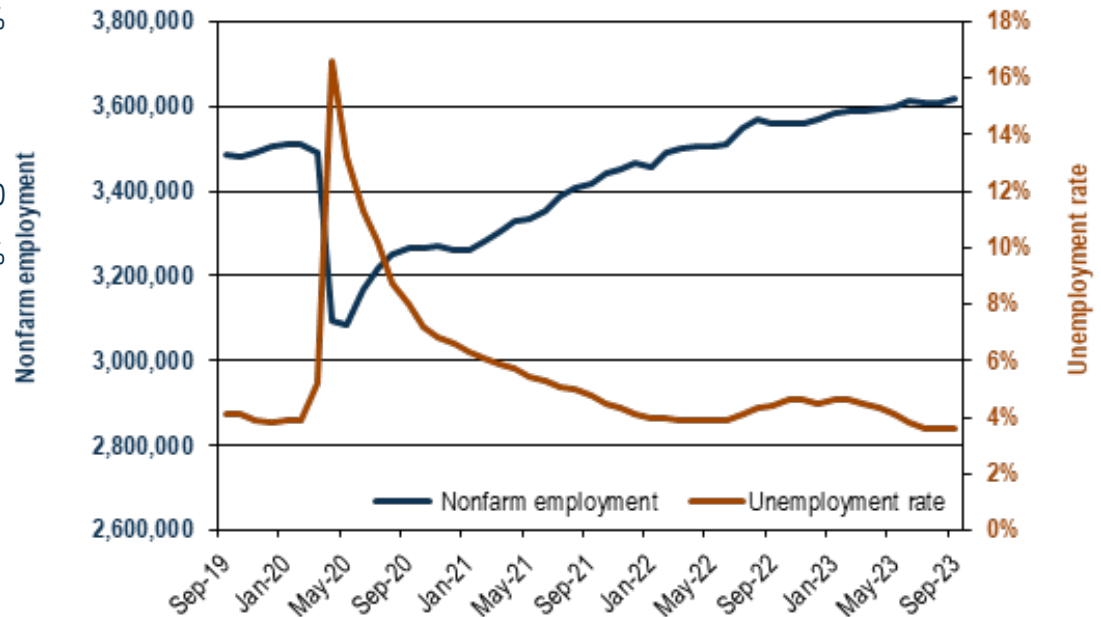
Unemployment rate: 3.8%

August 2023 (preliminary)

Nonfarm employment: 3,617,000

Unemployment rate: 3.6%

Nonfarm employment and unemployment rate, seasonally adjusted
 Washington state, September 2019 through September 2023
 Source: Employment Security Department/DATA; U.S. Bureau of Labor Statistics, Current Employment Statistics, Local Area Unemployment Statistics



Workers and businesses affected by COVID-19

Employment Security's COVID-19 online information page covers topics for businesses and workers impacted by COVID-19. Topics include:

- Subscribing for updates
- Frequently asked questions
- Workers Q&A
- Business Q&A
- CARES ACT
- COVID-19 rulemaking
- COVID-19 resources
- Action alerts and updates

We are all in this together. The COVID-19 pandemic has created an unprecedented demand for services, but we are building capacity, updating technology, and we thank you for your patience while we work to serve you better.

Did you know that you can subscribe for email updates on a number of Employment Security Department topics all at once?

Go to esd.wa.gov/labormarketinfo and select the email icon at the top of the page.



Enter your email address and subscribe by checking the boxes for topics such as:

- COVID-19
- Labor market information
- News releases
- Employer news and resources
- Paid Family and Medical Leave
- Employer information
- SharedWork program
- WorkSource system
- Unemployment insurance
- Training

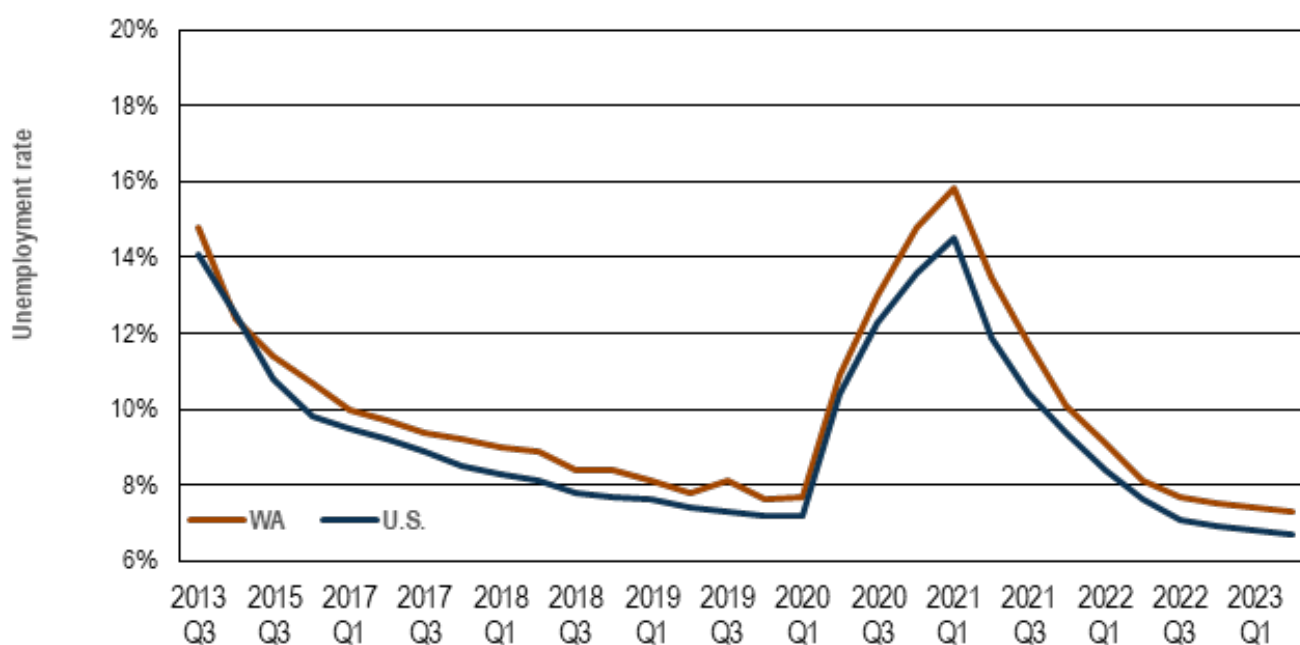
Many more to come, so sign up today for your email updates!

U-6: Broader annual average unemployment measure decreased in the four-quarter period through second quarter 2023

The U.S. Bureau of Labor Statistics (BLS) recently updated its “alternative measures of labor underutilization” for states to include four-quarter rates through second quarter 2023. One such alternative measure is the U-6 rate, which considers not only the unemployed population in the official “U-3” unemployment rate, but also marginally attached workers and those employed part

time for economic reasons. The U-6 rate is defined by BLS as the “total unemployed, plus all marginally attached workers, plus total employed part time for economic reasons, as a percent of the civilian labor force plus all marginally attached workers.” This U-6 measure measures the “unemployed, underemployed, and those who are not looking but who want a job.”

The U-6 annual average unemployment rate for the four-quarter period through second quarter 2023 for Washington state was 7.3 percent. This was lower compared to the 7.4 percent average for the four-quarter period through first quarter 2023. The U.S. U-6 average for the four-quarter period through second quarter 2023 was 6.7 percent.



Year	WA/U.S.	Q1	Q2	Q3	Annual average
2023	WA	7.4%	7.3%		
	U.S.	6.8%	6.7%		
2022	WA	9.1%	8.1%	7.7%	7.5%
	U.S.	8.4%	7.6%	7.1%	6.9%
2021	WA	15.8%	13.5%	11.7%	10.1%
	U.S.	14.5%	11.9%	10.4%	9.4%
2020	WA	8.1%	10.9%	13.0%	14.8%
	U.S.	7.7%	10.4%	12.3%	13.6%
2019	WA	8.1%	7.8%	8.1%	7.6%
	U.S.	7.6%	7.4%	7.3%	7.2%
2018	WA	9.0%	8.9%	8.4%	8.4%
	U.S.	8.3%	8.1%	7.8%	7.7%
2017	WA	10.0%	9.7%	9.4%	9.2%
	U.S.	9.5%	9.2%	8.9%	8.5%

Source: Bureau of Labor Statistics: <https://www.bls.gov/lau/stalt.htm>.

Industry employment in Washington, seasonally adjusted

One-month employment change by industry

Based on a BLS survey of businesses and governments, Washington added an estimated 7,900 jobs during the month, on a seasonally adjusted basis:

- Overall, employment increased in eight major industries and decreased in five.
- Private sector employment is estimated to have increased by 6,900 and government employment increased by 1,000.
- Professional and business services employment increased by 3,600, with 2,100 jobs added in administrative and support services.
- The number of jobs in education and health increased by 3,600, with 1,000 jobs gained in nursing and residential care facilities.
- Retail trade employment decreased by 800 overall, with 1,000 jobs lost in food and beverage stores.
- Construction employment fell by 1,100, with 1,000 jobs lost by specialty trade contractors.
- Employment in other services decreased by 2,100 overall, with 2,300 jobs lost in personal and laundry services.

Estimated one-month employment change by industry, seasonally adjusted
Washington state, July 2023 to August 2023

Source: Employment Security Department/DATA; U.S. Bureau of Labor Statistics, Current Employment Statistics

Total nonfarm	7,900
Professional and business services	3,900
Education and health services	3,600
Wholesale trade	1,900
Government	1,000
Transportation, warehousing and utilities	900
Information	600
Financial activities	300
Mining and logging	100
Leisure and hospitality	-100
Manufacturing	-300
Retail trade	-800
Construction	-1,100
Other services	-2,100

Industry employment in Washington, not seasonally adjusted

Change by industry over the year

Based on a BLS survey of businesses and governments, Washington gained an estimated 55,300 jobs from September 2022 through September 2023.

- Overall, nine major industries expanded and four decreased.
- Private sector employment rose 1.5 percent, up an estimated 45,200 jobs.
- Public sector employment rose 1.8 percent, up an estimated 10,100 jobs.
- Education and health services employment rose by 22,400 overall, with 19,900 jobs added in health services and social assistance.
- Employment in leisure and hospitality is up by 17,800, with food services and drinking places adding 10,700 jobs.
- Manufacturing employment increased by 2,600, with 7,000 jobs gained in aerospace product and parts manufacturing.
- Employment in construction is up 800 overall, led by an increase of 2,200 by specialty trade contractors.
- Professional and business services employment decreased by 1,400, with 9,400 jobs lost in employment services.

Estimated employment change by industry over the year, not seasonally adjusted
Washington state, September 2022 through September 2023

Source: Employment Security Department/DATA; U.S. Bureau of Labor Statistics, Current Employment Statistics

Total nonfarm	55,300
Education and health services	22,400
Leisure and hospitality	17,800
Government	10,100
Wholesale trade	4,200
Other services	3,600
Financial activities	3,500
Manufacturing	2,600
Transportation, warehousing and utilities	1,100
Construction	800
Mining and logging	-300
Professional and business services	-1,400
Retail trade	-3,200
Information	-5,900

Seasonally adjusted employment

Seasonally adjusted numbers account for normal seasonal patterns that occur year after year, such as strong seasonal hiring in retail trade around the holidays. Taking into account normal seasonal variations makes it possible to see unusual changes in employment levels.

Normal seasonal change is the expected monthly change in employment based on history.

Estimated change is the employment change over the month based on BLS survey data.

Seasonally adjusted change is change in employment accounting for normal seasonal patterns.

Normal seasonal change, estimated change and seasonally adjusted change
Washington state, September 2023

Source: Employment Security Department/DATA; U.S. Bureau of Labor Statistics, Current Employment Statistics

	Normal seasonal change	Estimated change	Seasonally adjusted change
Total nonfarm	-7,600	300	7,900
Government	7,900	8,900	1,000
Education and health services	3,600	7,200	3,600
Information	800	1,400	600
Wholesale trade	-100	1,800	1,900
Mining and logging	-100	0	100
Transportation, warehousing and utilities	-200	700	900
Manufacturing	-900	-1,200	-300
Financial activities	-1,200	-900	300
Other services	-2,000	-4,100	-2,100
Retail trade	-2,300	-3,100	-800
Construction	-2,400	-3,500	-1,100
Professional and business services	-2,900	1,000	3,900
Leisure and hospitality	-7,800	-7,900	-100

Based on historical patterns, Washington employment typically decreases by 7,600 from August to September. This year the state gained an estimated 300 jobs, amounting to a seasonally adjusted increase of 7,900 jobs.

- The employment increase on a seasonally adjusted basis was 3,900 in professional and business services in September. The normal seasonal decrease is 2,900. It is estimated to have increased this September by 1,000.
- The estimated employment decrease in construction was 3,500. The normal seasonal decrease is 2,400, so on a seasonally adjusted basis, construction employment decreased by 1,100.
- Typically, manufacturing employment decreases by 900 in September. On a seasonally adjusted basis, manufacturing employment decreased by 300 as the estimated decrease was 1,200.
- The normal seasonal loss in leisure and hospitality employment is 7,800 in August. The estimated loss was 7,900, so employment decreased by 100 on a seasonally adjusted basis.
- Employment in retail trade normally decreases by 2,300. It is estimated to have decreased by 3,100 this September so it decreased by 800 on a seasonally adjusted basis.

Media inquiries and contact information

Due to the high volume of requests for information, please send your emails to media@esd.wa.gov so that we can forward your requests to the appropriate staff.

For labor market information questions, please send your emails to data@esd.wa.gov.

Statewide labor economist:

Paul Turek, Ph.D.
Paul.turek@esd.wa.gov
 360-706-3044

Regional labor economists:

Scott Bailey
Scott.bailey@esd.wa.gov
 360-810-0048

Don Meseck
Don.meseck@esd.wa.gov
 509-607-3267

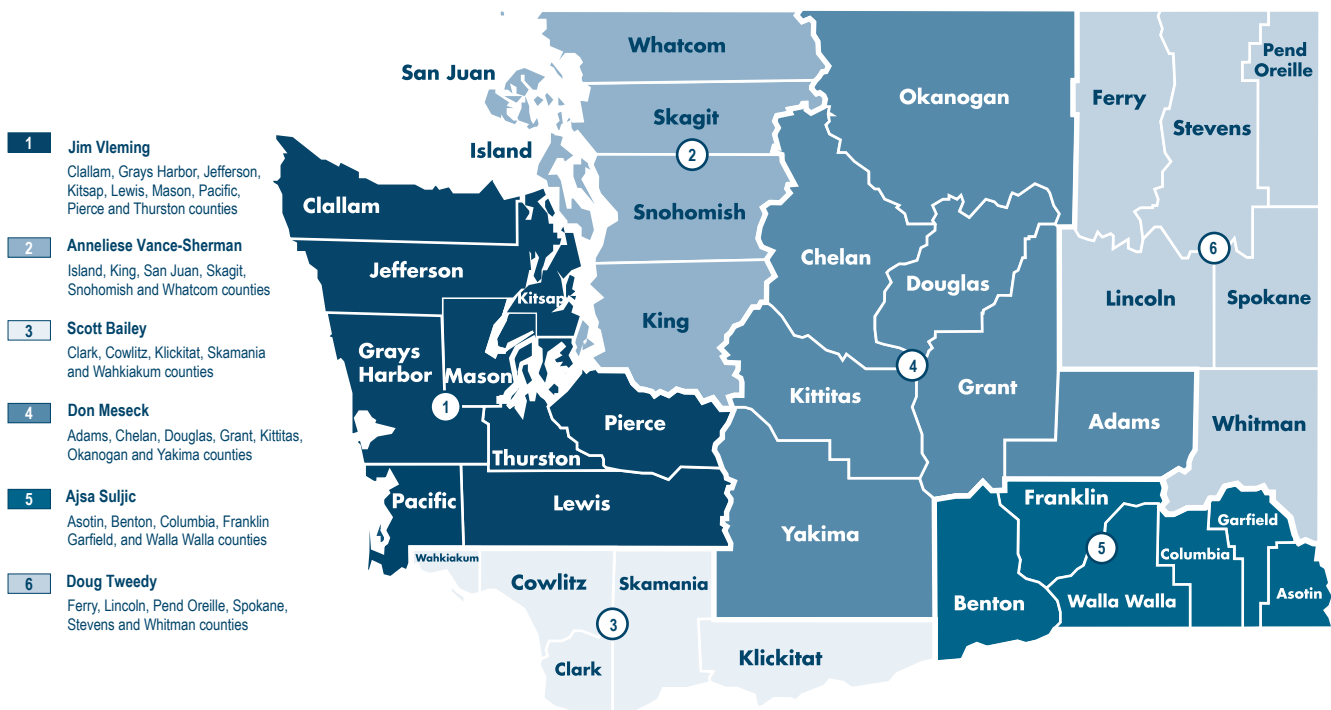
Ajsa Suljic
Ajsa.suljic@esd.wa.gov
 509-734-5928

Doug Tweedy
dtweedy@esd.wa.gov
 509-434-5278

Anneliese Vance-Sherman, Ph.D.
Anneliese.vancesherman@esd.wa.gov
 564-900-0748

Jim Vleming
Jim.vleming@esd.wa.gov
 360-819-3427

Washington state regional labor economist reporting areas



The county level information will be available at 10 a.m., October 24, 2023. The publication schedule for 2023 can be found at: <https://esd.wa.gov/labormarketinfo/monthly-employment-report>

Employment Security Department is an equal opportunity employer/programs. Auxiliary aids and services are available upon request to individuals with disabilities. Language assistance services for limited English proficient individuals are available free of charge. Washington Relay Service: 711.

This workforce product was funded by a grant awarded by the U.S. Department of Labor's Employment and Training Administration. The product was created by the recipient and does not necessarily reflect the official position of the U.S. Department of Labor. The Department of Labor makes no guarantees, warranties, or assurances of any kind, expressed or implied, with respect to such information, including any information on linked sites and including, but not limited to, accuracy of the information or its completeness, timeliness, usefulness, adequacy, continued availability, or ownership. This product is copyrighted by the institution that created it. Internal use by an organization and/or personal use by an individual for non-commercial purposes is permissible. All other uses require the prior authorization of the copyright owner.