

Quarterly Census of  
Employment and Wages  
Business Employment Dynamics  
April to June 2019

**Figure 1**

Net change in jobs,  
seasonally adjusted  
U.S. and Washington state,  
second quarter 2001 through  
second quarter 2019.

**Figure 2**

Gross job gains and losses,  
seasonally adjusted,  
Washington state,  
second quarter 2001 through  
second quarter 2019.

**Figure 3**

Net change in job gains and  
losses by industry sector,  
seasonally adjusted,  
United States,  
second quarter 2019.

**Figure 4**

Net change in job gains and  
losses by industry sector,  
seasonally adjusted,  
Washington state,  
second quarter 2019.

**Figure 5**

Net change in jobs by industry  
sector, seasonally adjusted,  
Washington state,  
second quarter 2018 and 2019.

**Labor Market and  
Economic Analysis**

**February 2020**



**Employment  
Security  
Department**  
WASHINGTON STATE

**Washington State  
Business Employment Dynamics  
Second Quarter 2019**



In second quarter 2019, April to June, seasonally adjusted job gains in Washington's private sector totaled 190,042 while job losses from businesses closing or contracting totaled 164,526. The result of these changes was a net gain of 26,416 jobs during the second quarter. These numbers show the key changes in private sector employment, also called Business Employment Dynamics (BED).

The U.S. Bureau of Labor Statistics' Business Employment Dynamics data series highlights the forces driving labor market dynamics at the state and national levels. Job gains and losses at private business establishments are tracked showing employment changes due to establishment openings or closings versus adding or shedding jobs at existing firms. The most recent BED data cover events through second quarter 2019.

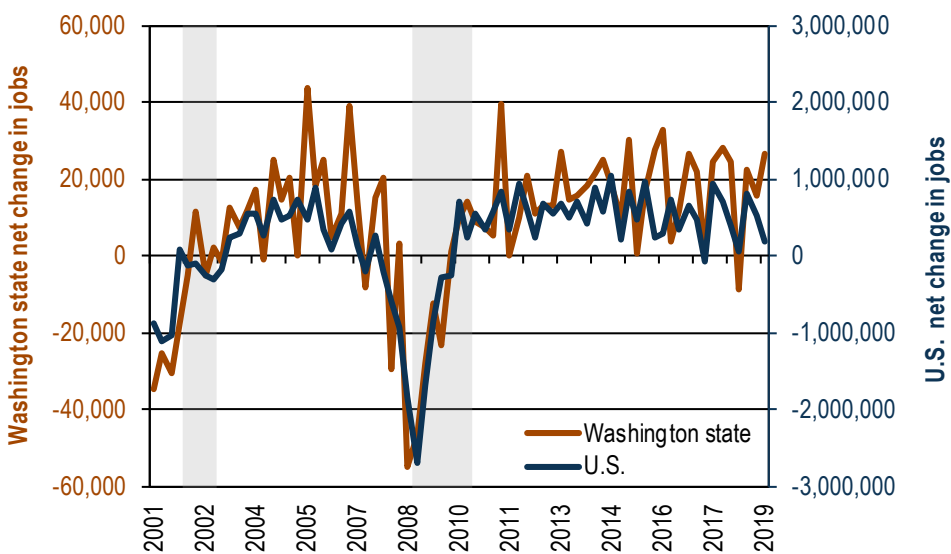
Employment Security Department is an equal opportunity employer/program.  
Auxiliary aids and services are available upon request to people with disabilities.  
Language assistance services for limited English proficient individuals are available free of charge.  
Washington Relay Service: 711.

## Net job gains increase for the state but decrease for the nation from the previous quarter

Nationally, job gains exceeded job losses in 26 states for a net private sector employment gain of 182,000. The jobs gained during the second quarter was less than the 525,000 jobs gained during the previous quarter. Washington state gained 26,416 jobs. With the increase, Washington has now added jobs in every quarter since 2009 but one.

Figure 1 depicts the changing business employment dynamic and compares Washington state to national trends. On a national and state basis, net job gains and losses are sensitive to the business cycle. During the 2001 recession, net job losses appeared very quickly. Net job growth resumed in 2002 and carried through until the most recent recession beginning in fourth quarter 2007. Job growth began to pick up in 2010 for the state and nation, and continued for both every quarter until Washington experienced negative net job gains in the third quarter of 2018.

**Figure 1.** Net change in jobs, seasonally adjusted  
United States and Washington state, second quarter 2001 through second quarter 2019  
Source: U.S. Bureau of Labor Statistics, Business Employment Dynamics data series



*Job growth in the U.S. receded, but advanced in Washington during second quarter 2019.*

Note: Shaded areas are U.S. recession periods.

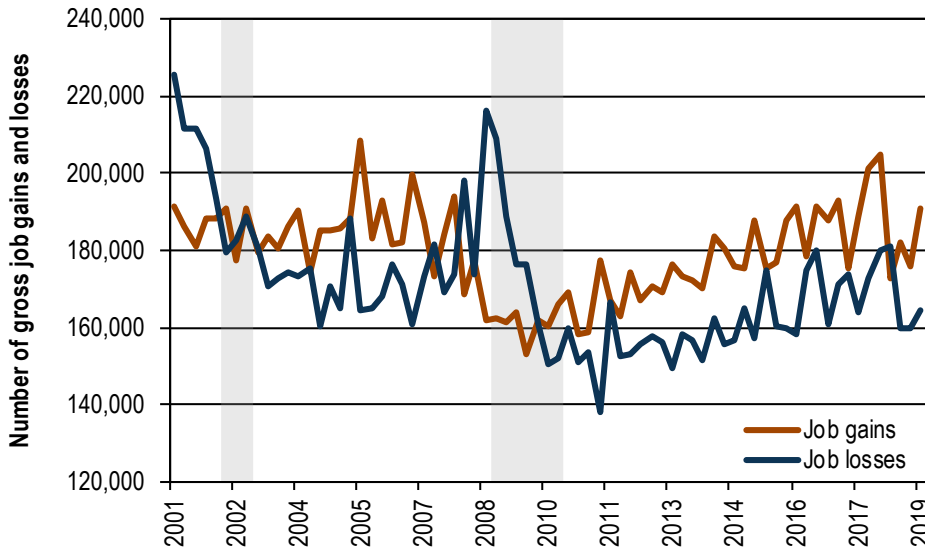
At the national level, gross job gains were 7.6 million at opening and expanding establishments. Closing and contracting establishments lost 7.4 million jobs. Gross job losses were 6.0 percent of private sector employment. Opening establishments provided 1.4 million jobs. Washington state gained 190,942 jobs from new and expanding private businesses and lost 164,526 jobs from businesses closing or contracting for a net gain of 26,416 jobs in second quarter 2019. This compares to a net gain of 15,967 jobs in first quarter 2019 and a net gain of 24,720 jobs in second quarter 2018.

More labor market information is available at: [www.esd.wa.gov/labormarketinfo](http://www.esd.wa.gov/labormarketinfo)

For more on the Business Employment Dynamics data series, visit: [www.bls.gov/bdm](http://www.bls.gov/bdm)

Figure 2 shows the quarterly pattern of gross job gains and losses in Washington state.

**Figure 2.** Gross job gains and losses, seasonally adjusted  
Washington state, second quarter 2001 through second quarter 2019  
Source: U.S. Bureau of Labor Statistics, Business Employment Dynamics data series



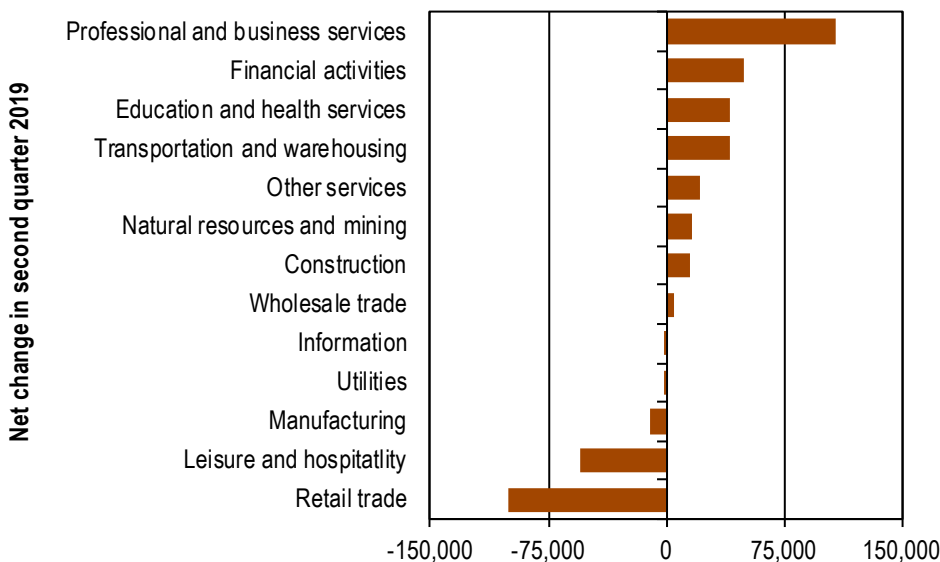
*Gross job gains rose faster than did gross job losses in second quarter 2019.*

Note: Shaded areas are U.S. recession periods

### Nationally, more industries added jobs than lost jobs

The data in Figure 3 illustrate the net change in industry employment for the U.S. Total private sector employment rose by 182,000 in second quarter 2019. Service-providing industries had a seasonally adjusted net gain of 161,000 jobs and goods-producing industries posted a net gain of 21,000 jobs. In second quarter 2019, eight industry sectors reported job gains compared with nine reporting gains during second quarter 2018.

**Figure 3.** Net change in job gains and losses by industry sector, seasonally adjusted  
United States, second quarter 2019  
Source: U.S. Bureau of Labor Statistics, Business Employment Dynamics data series



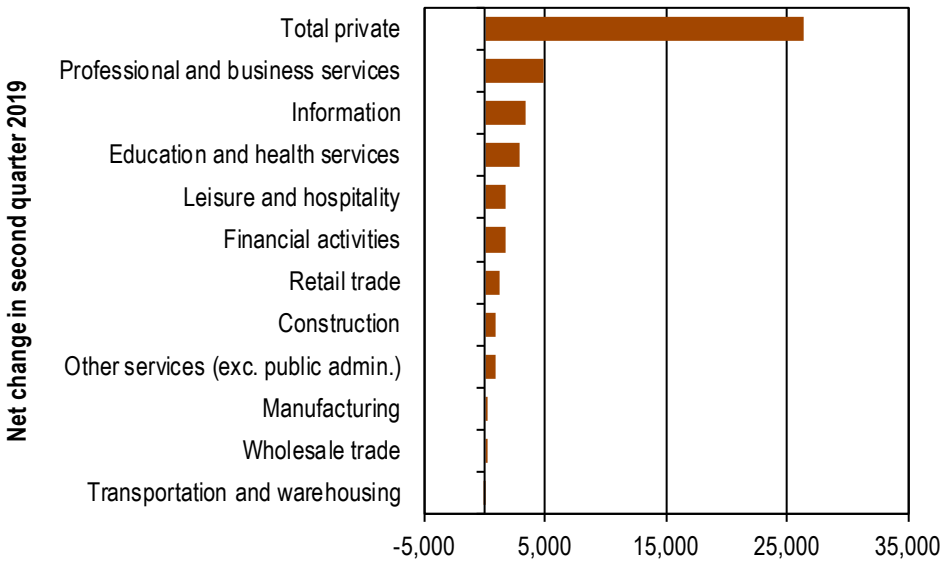
*Professional and business services reported the most net gains while retail trade reported the most net losses in second quarter 2019.*

# Washington state industry employment

Figure 4 shows net employment changes in Washington state industry sectors. Total private sector employment had a net increase of 26,416. Ten industry sectors reported net job gains in second quarter 2019 and one industry sector showed job losses. The top three industry sectors showing job gains were professional and business services with a gain of 4,907, followed by information (3,324) and education and health services (2,872)..

The only industry that experienced job losses was transportation and warehousing (-135).

**Figure 4.** Net change in job gains and losses by industry sector, seasonally adjusted Washington state, second quarter 2019  
Source: U.S. Bureau of Labor Statistics, Business Employment Dynamics data series

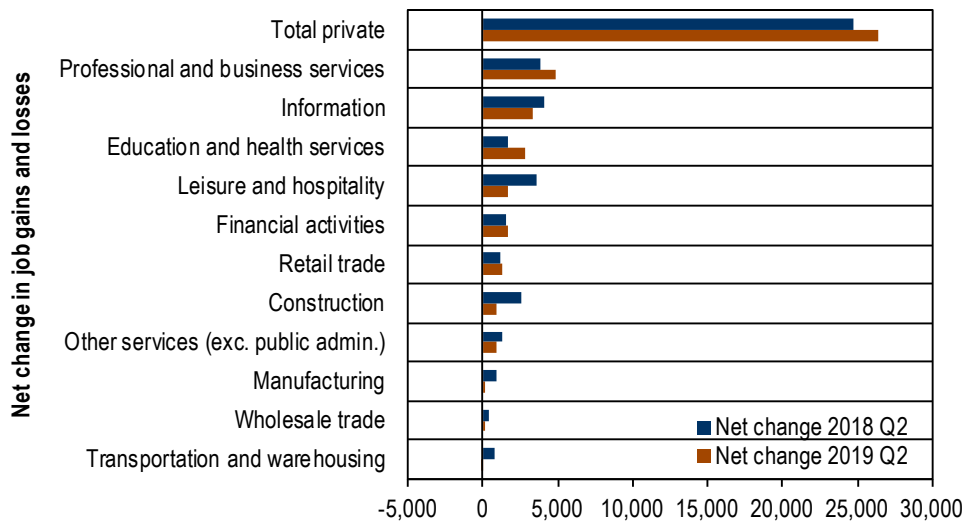


*In Washington state, professional and business services, information, and education and health services had the most job gains in second quarter 2019.*

Comparing second quarter 2019 to second quarter 2018 in Washington state (Figure 5):

- Four of 11 private industry sectors had higher net gains from second quarter 2018 relative to second quarter 2019.
- Education and health services had the largest net gain from year to year with a gain of 2,872 jobs in second quarter 2019 compared with a gain of 1,750 in second quarter 2018.
- Leisure and hospitality had the largest net decline from year to year with a gain of 1,729 jobs in second quarter 2019 compared with a gain of 3,657 in second quarter 2018.

**Figure 5.** Net change in jobs by industry sector, seasonally adjusted Washington state, second quarter 2018 and 2019  
Source: U.S. Bureau of Labor Statistics, Business Employment Dynamics data series



*Washington had more jobs gained in four industries and fewer jobs gained in seven industries from second quarter 2018 relative to second quarter 2019.*

**Note:** data for natural resources, mining and utilities are not disclosed in order to maintain employer confidentiality.

## BED report contacts

Paul Turek, *Economist*  
*BED Author*  
 pturek@esd.wa.gov  
 360-507-9599

Molly Webster,  
*QCEW Supervisor*  
 mwebster@esd.wa.gov  
 360-507-9581

Danell McMillian,  
*QCEW Research Analyst*  
 Dmcmillian@esd.wa.gov  
 360-507-9582

## Contact an economist online!

We have seven regional economists serving local labor markets in Washington. Regional economists can help you find and use labor-market data, fulfill special data requests and answer questions about the labor market in your area. They serve professionals and organizations in their areas for WorkSource offices, workforce development councils, non-profit organizations, higher education, businesses and the news media.

### Statewide labor economist:

Paul Turek, Ph.D.  
 pturek@esd.wa.gov  
 360-507-9599

### Regional labor economists:

Scott Bailey  
 scott.bailey@esd.wa.gov  
 360-810-0048

Don Meseck  
 dmeseck@esd.wa.gov  
 509-574-0176

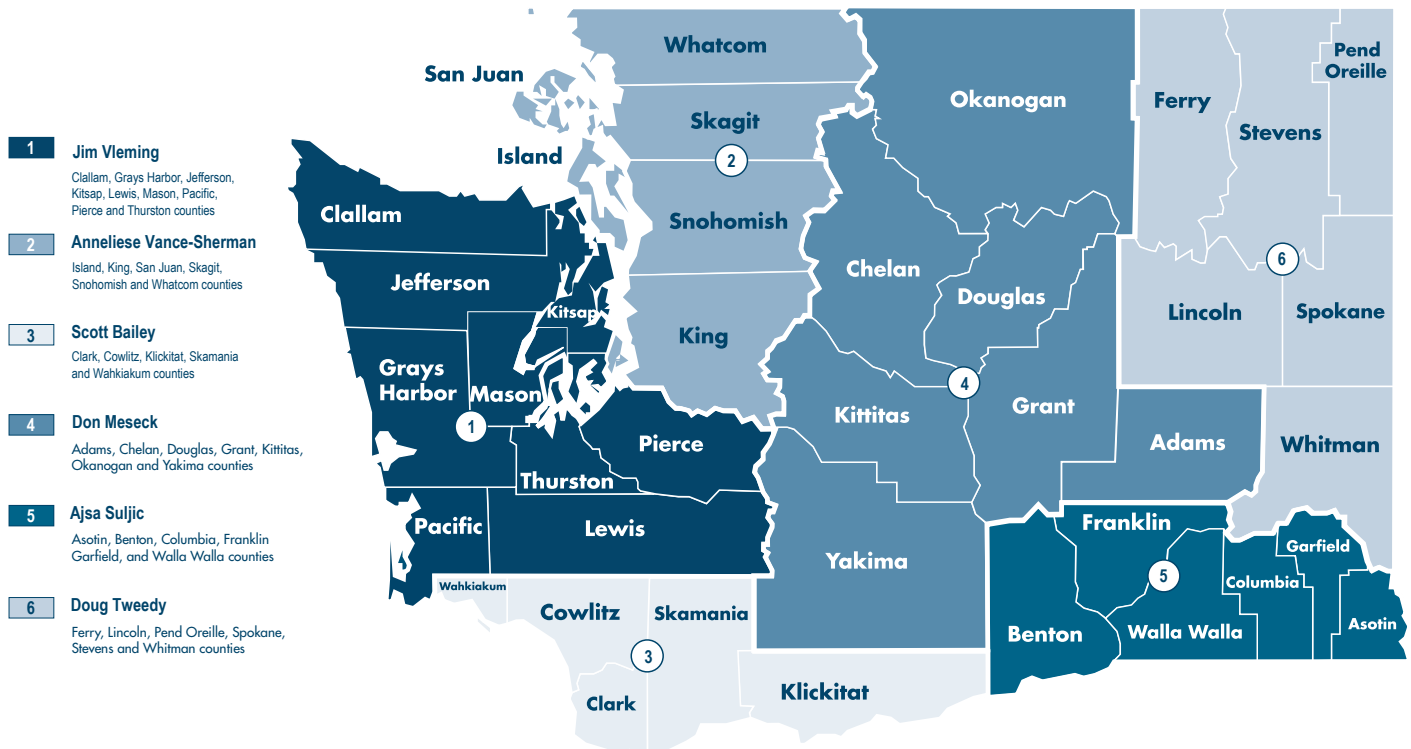
Ajsa Suljic  
 asuljic@esd.wa.gov  
 509-734-5928

Doug Tweedy  
 dtweedy@esd.wa.gov  
 509-532-3188

Anneliese Vance-Sherman, Ph.D.  
 avancesherman@esd.wa.gov  
 425-258-6315

Jim Vleming  
 jvleming@esd.wa.gov  
 360-507-9601

## Washington state regional labor economist reporting areas



This workforce product was funded by a grant awarded by the U.S. Department of Labor's Employment and Training Administration. The product was created by the recipient and does not necessarily reflect the official position of the U.S. Department of Labor. The Department of Labor makes no guarantees, warranties, or assurances of any kind, expressed or implied, with respect to such information, including any information on linked sites and including, but not limited to, accuracy of the information or its completeness, timeliness, usefulness, adequacy, continued availability, or ownership. This product is copyrighted by the institution that created it. Internal use by an organization and/or personal use by an individual for non-commercial purposes is permissible. All other uses require the prior authorization of the copyright owner.